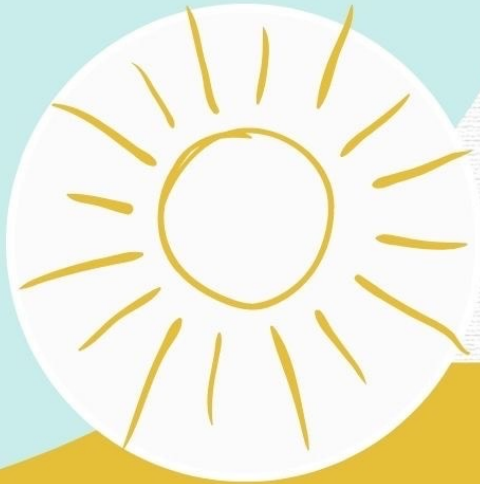


VANTAGE POINT CENTER FOR PSYCHOTHERAPY



About The Evaluations

A comprehensive psychological evaluation will explore the various neuropsychological, psychoeducational, and psychological aspects of a person's functioning. Depending on the needs of each person, testing can explore issues related to intelligence, reading, language usage, attention, learning, processing speed, reasoning, memory, problem solving, mood, and personality. These assessments help to identify strengths and deficits in an individual's overall functioning, clarify diagnosis, and offer recommendations to support the improvement of a person's life experience.

For information contact:

Info@VPwell.com

<http://www.vppsychotherapy.com>

Comprehensive Psychological Assessment Program

Evaluations Can Diagnosis:

- Attention, Inattention, Hyperactivity, Impulsivity
- Anxiety
- Depression
- Intelligence and Intellectual Deficits
- Learning Disabilities
- Memory, Reasoning, Problem Solving
- Obsessive Compulsive Disorder (OCD)
- Personality Disorders
- Social Emotional Functioning

The results of these evaluations can help to identify appropriate academic accommodations and recommendations for future treatment.

