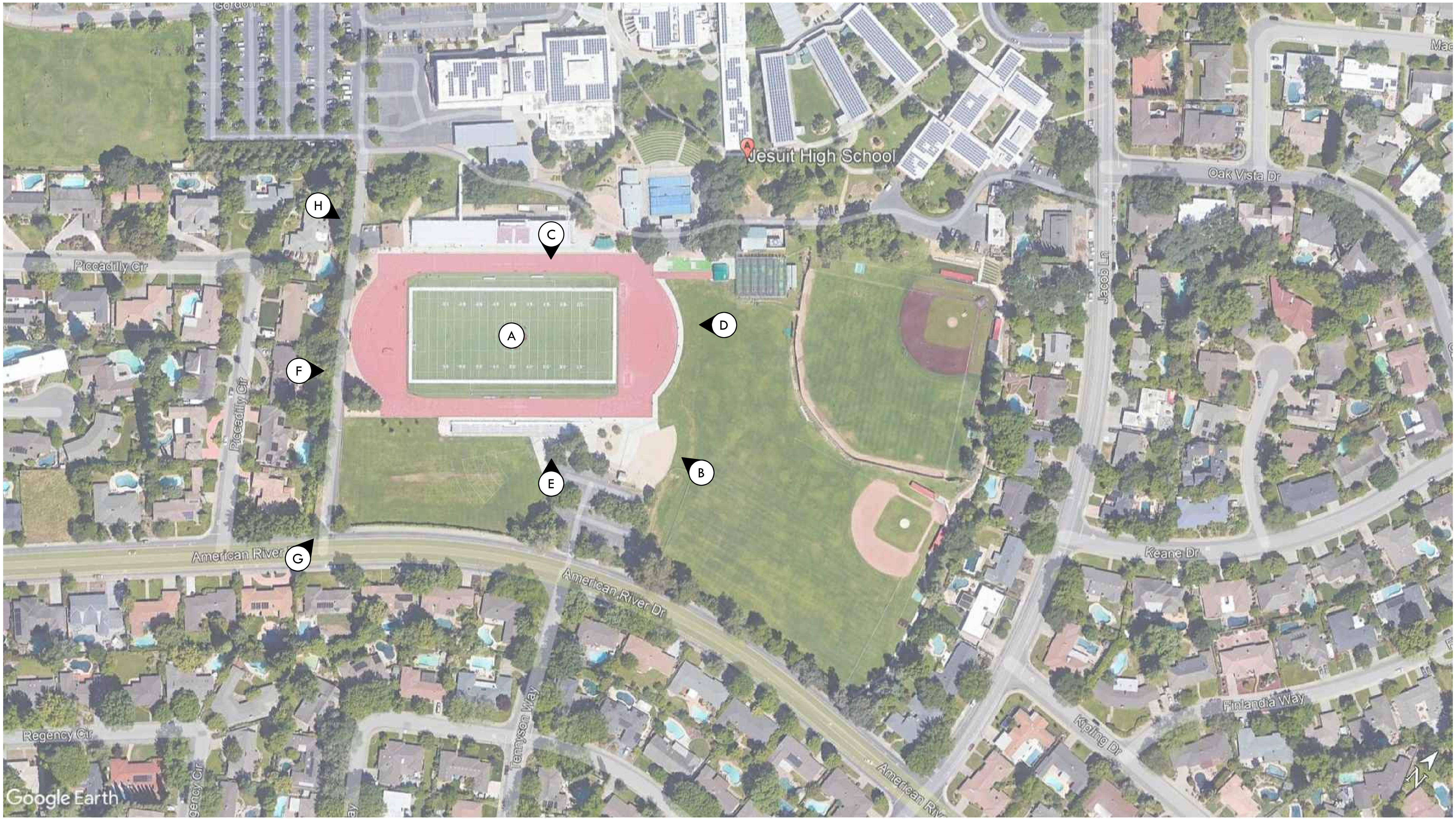


ALL IDEAS, DESIGNS, ARRANGEMENTS, AND PLANS INDICATED OR REPRESENTED BY THIS DRAWING ARE OWNED BY AND THE PROPERTY OF VERDE DESIGN, INC. AND WERE CREATED, EVOLVED, AND DEVELOPED FOR USE ON AND IN CONNECTION WITH THE SPECIFIED PROJECT. NONE OF SUCH IDEAS, DESIGNS, ARRANGEMENTS OR PLANS SHALL BE USED, REPRODUCED, OR PUBLISHED BY ANY METHOD, IN WHOLE OR IN PART, OR DISCLOSED TO ANY PERSON, FIRM, OR CORPORATION FOR ANY PURPOSE, WHATSOEVER, WITHOUT WRITTEN PERMISSION OF VERDE DESIGN, INC.



PERSPECTIVE SITE MAP



**VERDE DESIGN**  
 LANDSCAPE ARCHITECTURE  
 CIVIL ENGINEERING  
 SPORT PLANNING & DESIGN  
 1843 Iron Point Rd, Suite 140  
 Folsom, CA 95630  
 Tel: 916.415.6554  
 Fax: 916.415.6525  
 www.VerdeDesigninc.com

STAMP

CONSULTANT

SHEET TITLE

**PERSPECTIVE  
 SITE MAP**

PROJECT NAME

**JESUIT HIGH SCHOOL  
 STADIUM LIGHT  
 IMPROVEMENTS**

PROJECT ADDRESS

**1200 JACOB LN.  
 CARMICHAEL, CA  
 95608**

SUBMITTAL	DATE
100% SUBMITTAL	02/04/22

NO.	REVISIONS	DATE
△		
△		
△		
△		
△		
△		

DRAWN BY: **VERDE**      CHECKED BY: **CS**

DATE ISSUED: **02/04/2022**      SCALE: **AS NOTED**

PROJ. NO. **1612100**

SHEET NO. **M1.12** OF SHEETS

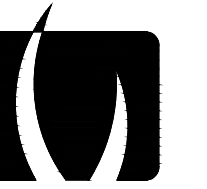
ALL IDEAS, DESIGNS, ARRANGEMENTS, AND PLANS INDICATED OR REPRESENTED BY THIS DRAWING ARE OWNED BY AND THE PROPERTY OF VERDE DESIGN, INC. AND WERE CREATED, EVOLVED, AND DEVELOPED FOR USE ON AND IN CONNECTION WITH THE SPECIFIED PROJECT. NONE OF SUCH IDEAS, DESIGNS, ARRANGEMENTS OR PLANS SHALL BE USED, REPRODUCED, OR PUBLISHED BY ANY METHOD, IN WHOLE OR IN PART, OR DISCLOSED TO ANY PERSON, FIRM, OR CORPORATION FOR ANY PURPOSE WHATSOEVER WITHOUT WRITTEN PERMISSION OF VERDE DESIGN, INC.



(A) TOP VIEW



(B) ANGLE AERIAL PERSPECTIVE



**VERDE DESIGN**  
 LANDSCAPE ARCHITECTURE  
 CIVIL ENGINEERING  
 SPORT PLANNING & DESIGN  
 1843 Iron Point Rd. Suite 140  
 Folsom, CA 95630  
 Tel: 916.415.6554  
 Fax: 916.415.6525  
 www.VerdeDesigninc.com

STAMP

CONSULTANT

SHEET TITLE

**STADIUM LIGHTING  
 RENDER**

PROJECT NAME

**JESUIT HIGH SCHOOL  
 STADIUM LIGHT  
 IMPROVEMENTS**

PROJECT ADDRESS

**1200 JACOB LN.  
 CARMICHAEL, CA  
 95608**

SUBMITTAL	DATE
100% SUBMITTAL	02/04/22

NO.	REVISIONS	DATE
△		
△		
△		
△		
△		
△		

DRAWN BY <b>MUSCO</b>	CHECKED BY <b>CS</b>
--------------------------	-------------------------

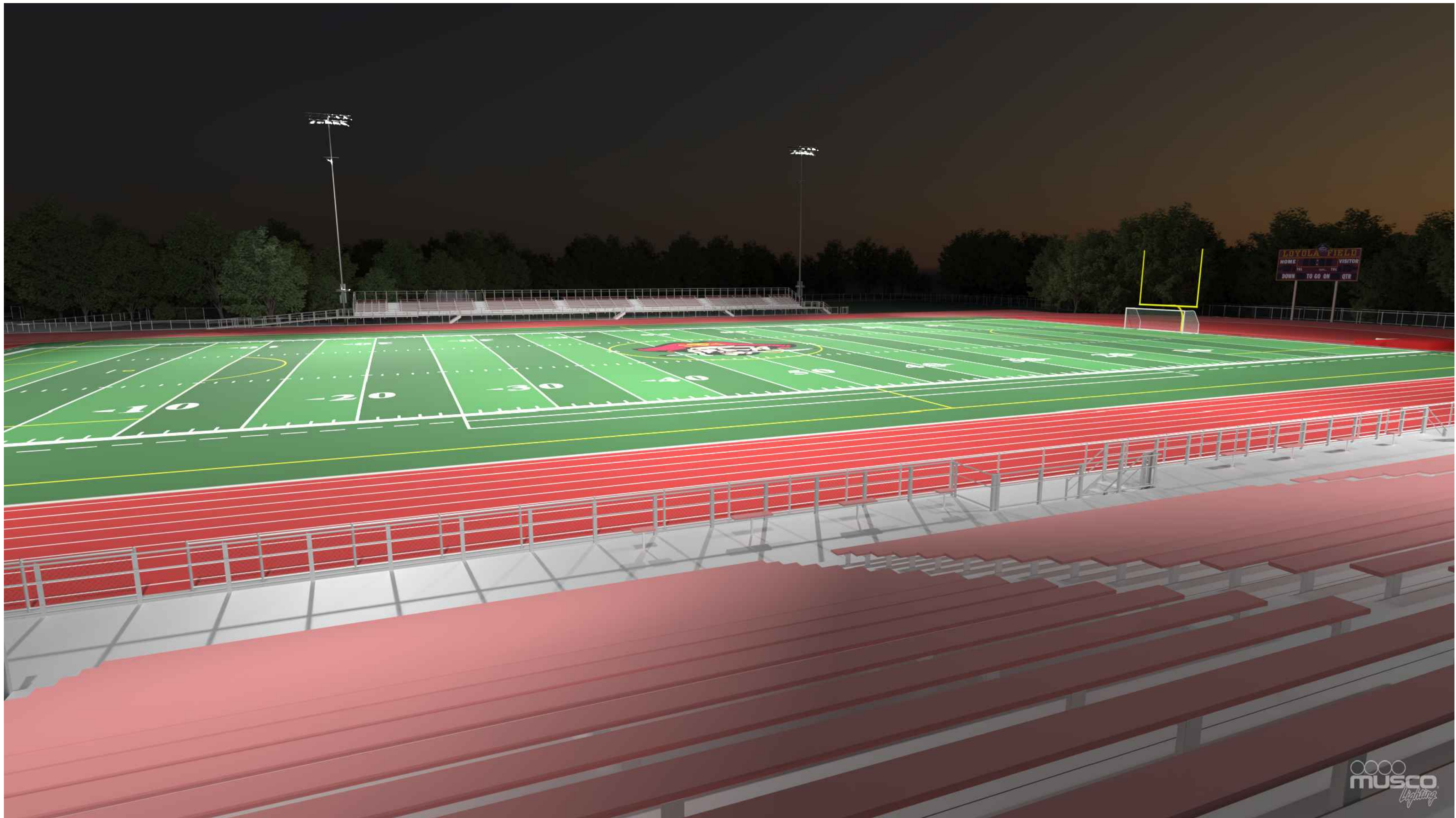
DATE ISSUED <b>02/04/2022</b>	SCALE <b>AS NOTED</b>
----------------------------------	--------------------------

PROJ. NO. <b>1612100</b>
-----------------------------

SHEET NO.  
**M1.8** OF SHEETS

**STADIUM LIGHTING RENDER**

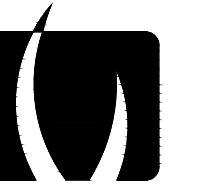
ALL IDEAS, DESIGNS, ARRANGEMENTS, AND PLANS INDICATED OR REPRESENTED BY THIS DRAWING ARE OWNED BY AND THE PROPERTY OF VERDE DESIGN, INC. AND WERE CREATED, EVOLVED, AND DEVELOPED FOR USE ON AND IN CONNECTION WITH THE SPECIFIED PROJECT. NONE OF SUCH IDEAS, DESIGNS, ARRANGEMENTS OR PLANS SHALL BE USED, REPRODUCED, OR PUBLISHED BY ANY METHOD, IN WHOLE OR IN PART, OR DISCLOSED TO ANY PERSON, FIRM, OR CORPORATION FOR ANY PURPOSE, WHATSOEVER, WITHOUT WRITTEN PERMISSION OF VERDE DESIGN, INC.



(C) VIEW FROM BLEACHERS



(D) VIEW FROM SCHOOL TOWARDS STADIUM (FROM BASEBALL FIELD)



**VERDE DESIGN**  
 LANDSCAPE ARCHITECTURE  
 CIVIL ENGINEERING  
 SPORT PLANNING & DESIGN  
 1843 Iron Point Rd, Suite 140  
 Folsom, CA 95630  
 Tel: 916.415.6554  
 Fax: 916.415.6525  
 www.VerdeDesigninc.com

STAMP

CONSULTANT

SHEET TITLE

**STADIUM LIGHTING  
 RENDER**

PROJECT NAME

**JESUIT HIGH SCHOOL  
 STADIUM LIGHT  
 IMPROVEMENTS**

PROJECT ADDRESS

**1200 JACOB LN.  
 CARMICHAEL, CA  
 95608**

SUBMITTAL	DATE
100% SUBMITTAL	02/04/22

NO.	REVISIONS	DATE
△		
△		
△		
△		
△		
△		

DRAWN BY <b>MUSCO</b>	CHECKED BY <b>CS</b>
--------------------------	-------------------------

DATE ISSUED <b>02/04/2022</b>	SCALE <b>AS NOTED</b>
----------------------------------	--------------------------

PROJ. NO. **1612100**

SHEET NO. **M1.9** OF SHEETS

**STADIUM LIGHTING RENDER**

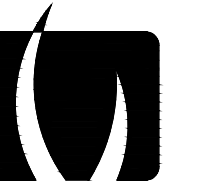
ALL IDEAS, DESIGNS, ARRANGEMENTS, AND PLANS INDICATED OR REPRESENTED BY THIS DRAWING ARE OWNED BY AND THE PROPERTY OF VERDE DESIGN, INC. AND WERE CREATED, EVOLVED, AND DEVELOPED FOR USE ON AND IN CONNECTION WITH THE SPECIFIED PROJECT. NONE OF SUCH IDEAS, DESIGNS, ARRANGEMENTS OR PLANS SHALL BE USED, REPRODUCED, OR PUBLISHED BY ANY METHOD, IN WHOLE OR IN PART, OR DISCLOSED TO ANY PERSON, FIRM, OR CORPORATION FOR ANY PURPOSE WHATSOEVER WITHOUT WRITTEN PERMISSION OF VERDE DESIGN, INC.



(E) VIEW FROM SCHOOL TOWARDS STADIUM



(F) VIEW FROM ADJACENT PROPERTIES TOWARD STADIUM - 1



**VERDE DESIGN**  
 LANDSCAPE ARCHITECTURE  
 CIVIL ENGINEERING  
 SPORT PLANNING & DESIGN  
 1843 Iron Point Rd, Suite 140  
 Folsom, CA 95630  
 Tel: 916.415.6554  
 Fax: 916.415.6525  
 www.VerdeDesigninc.com

STAMP

CONSULTANT

SHEET TITLE

**STADIUM LIGHTING  
 RENDER**

PROJECT NAME

**JESUIT HIGH SCHOOL  
 STADIUM LIGHT  
 IMPROVEMENTS**

PROJECT ADDRESS

**1200 JACOB LN.  
 CARMICHAEL, CA  
 95608**

SUBMITTAL	DATE
100% SUBMITTAL	02/04/22

NO.	REVISIONS	DATE
△		
△		
△		
△		
△		
△		

DRAWN BY <b>MUSCO</b>	CHECKED BY <b>CS</b>
--------------------------	-------------------------

DATE ISSUED <b>02/04/2022</b>	SCALE <b>AS NOTED</b>
----------------------------------	--------------------------

PROJ. NO. <b>1612100</b>
-----------------------------

SHEET NO. <b>M1.10</b>	OF <b> </b>	SHEETS <b> </b>
---------------------------	----------------	--------------------

**STADIUM LIGHTING RENDER**

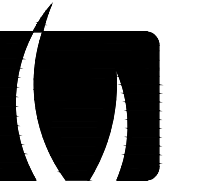
ALL IDEAS, DESIGNS, ARRANGEMENTS, AND PLANS INDICATED OR REPRESENTED BY THIS DRAWING ARE OWNED BY AND THE PROPERTY OF VERDE DESIGN, INC. AND WERE CREATED, EVOLVED, AND DEVELOPED FOR USE ON AND IN CONNECTION WITH THE SPECIFIED PROJECT. NONE OF SUCH IDEAS, DESIGNS, ARRANGEMENTS OR PLANS SHALL BE USED, REPRODUCED, OR PUBLISHED BY ANY METHOD, IN WHOLE OR IN PART, OR DISCLOSED TO ANY PERSON, FIRM, OR CORPORATION FOR ANY PURPOSE WHATSOEVER WITHOUT WRITTEN PERMISSION OF VERDE DESIGN, INC.



(G) VIEW FROM ADJACENT PROPERTIES TOWARD STADIUM - 2



(H) VIEW FROM ADJACENT PROPERTIES TOWARD STADIUM - 3



**VERDE DESIGN**  
 LANDSCAPE ARCHITECTURE  
 CIVIL ENGINEERING  
 SPORT PLANNING & DESIGN  
 1843 Iron Point Rd, Suite 140  
 Folsom, CA 95630  
 tel: 916.415.6554  
 fax: 916.415.6525  
 www.VerdeDesigninc.com

STAMP

CONSULTANT

SHEET TITLE

**STADIUM LIGHTING  
 RENDER**

PROJECT NAME

**JESUIT HIGH SCHOOL  
 STADIUM LIGHT  
 IMPROVEMENTS**

PROJECT ADDRESS

**1200 JACOB LN.  
 CARMICHAEL, CA  
 95608**

SUBMITTAL	DATE
100% SUBMITTAL	02/04/22

NO.	REVISIONS	DATE
△		
△		
△		
△		
△		
△		

DRAWN BY <b>MUSCO</b>	CHECKED BY <b>CS</b>
--------------------------	-------------------------

DATE ISSUED <b>02/04/2022</b>	SCALE <b>AS NOTED</b>
----------------------------------	--------------------------

PROJ. NO. <b>1612100</b>
-----------------------------

SHEET NO. <b>M1.11</b>	OF <b> </b>	SHEETS <b> </b>
---------------------------	----------------	--------------------

**STADIUM LIGHTING RENDER**